

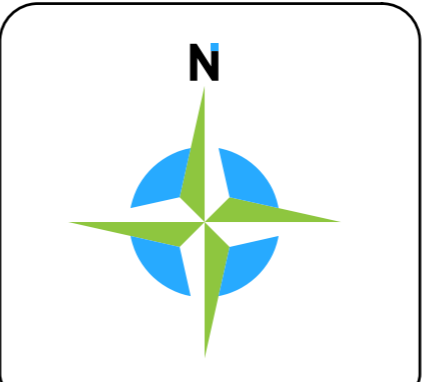


Ver.	Description	Drawn	Date	Checked
A	Initial Issue	SDW	29/06/2020	MBW

FILES
map\COG0 - 98994
Control Register:- 98994
File Name:- 98994an-077a.dgn

PRECAL LEGEND
See below Lot Stats Table for further information

- Stage Boundary
- Vehicle Access Restriction
- Potential Dwellings / Lot

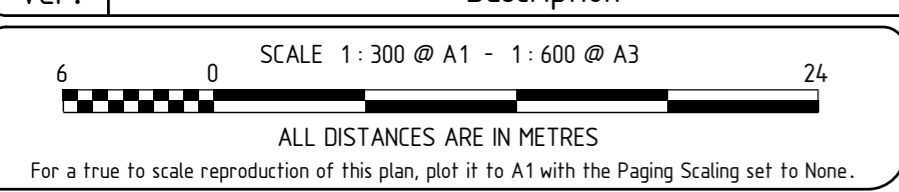


VERTEX
STAGE 3A - Angles Plan
Moorpark Avenue, YANCHEP



CLIENT:

The contents of this plan are current and correct as of the date stated within the revision panel. All consultants and persons wishing to utilise this data should satisfy themselves of this plan's currency by contacting the M&Mullen Nolan Group.



The boundaries depicted on this plan were not re-established as part of this survey, therefore this plan does not guarantee their accuracy.

Re-establishment of the cadastral boundaries is recommended for any proposed works on or near existing boundaries.



McMULLEN NOLAN GROUP
Level 1, 2 Sabre Crescent
Jandakot, W.A. 6164
PO Box 3326, Success
W.A. 6964, Australia
A&N 90 009 363 311
Offices in: Broome, Bunbury, Kununurra, Newman, Port Hedland, Melbourne

Tel: (08) 6436 1599
Fax: (08) 6436 1500
info@mngsurvey.com.au
www.mngsurvey.com.au

Project Mng: Matthew B. WEBB Datum: PCG94

98894 - 077 - A
Number Number Version